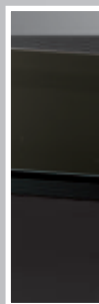
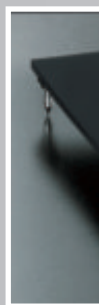
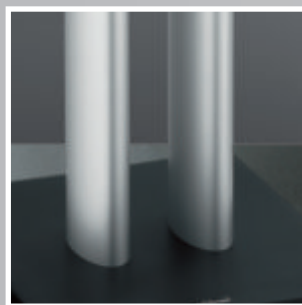
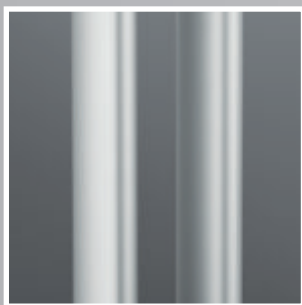
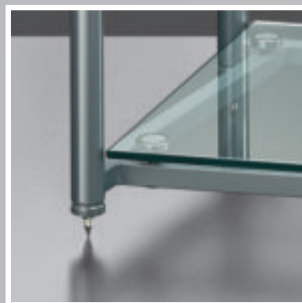
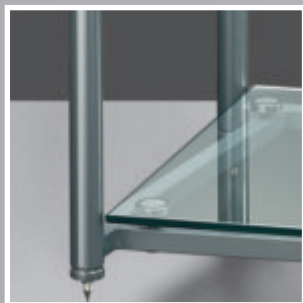
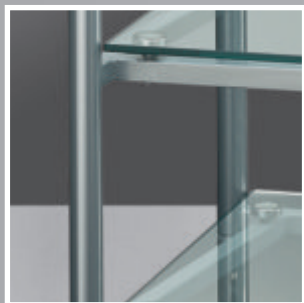
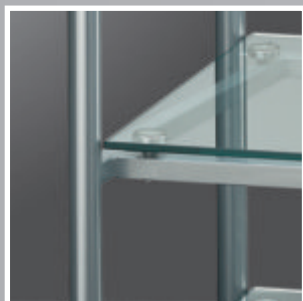
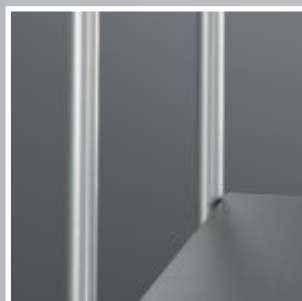




solidsteel



# solidsteel



## **Series 5**

Our most complete and worldwide successful line. The first series of audio tables with duraluminium cones for the best resonance control.



## **Series 6**

Our flagship models, designed without compromise to reduce undesirable resonances almost to zero. With these tables you will hear the qualities of your audio system better than you ever have.



## **Series 7 Design**

The new Series 7 perfect for any electronics: Hi-fi, Hi-End or audio/video. Designed by enthusiasts for enthusiasts, it combines performances and style like never before.



## **Series ZR**

The ZR stands are designed to enhance the qualities of any bookshelf speakers, thanks to their level of built and finish.



## **Series ZX**

The ZX stands with a particular reinforced and anti-resonant frame are a further quality step to match higher quality loudspeakers.



## **Series SS**

If for your top quality bookshelf speakers you are looking for the most sophisticated and acoustically isolated structure, this is something for you.



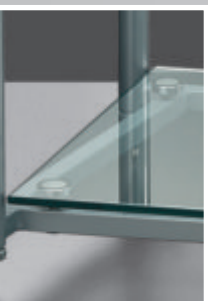
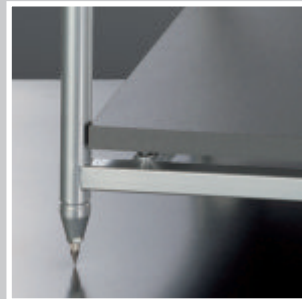
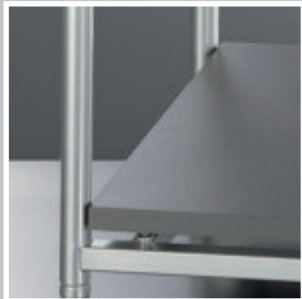
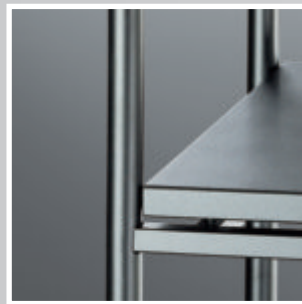
## **Series AB**

The most rigid, neutral and best looking platform for your power amplifier.



## **Accessories**

Duraluminium cones and steel discs, available also separately, will become basics for your audio system.



Since their introduction in 1991, Solidsteel audio tables have established a new level of technical and aesthetic refinement for audio and video component support and isolation. After only fifteen years, Solidsteel has gained worldwide recognition in more than thirty



countries throughout Europe, Asia, North and South America.

The international press have universally praised the tables – and in some cases awarded them “best in class” – for the improvements they can make to an audio or audio/video system.



From the very beginning the ingredients for the success have always been: innovative choices, attention to details and the true expertise in metalworking derived from the long engagement with a renowned Italian motorcycle company.

The Solidsteel line offers a choice of audio tables with four legs; horizontal A/V tables; stands and bases for speakers and power amplifiers; and our renowned duraluminium cones, available also separately.





- ▶ To minimise resonances, every shelf is supported and isolated from the frame by three duraluminium cones, four cones with O-ring in Series Seven.
- ▶ The cones are positioned to precisely discharge unwanted energies into the chassis in the same direction of the spikes, i.e. to the ground.
- ▶ Isolation through cones provides superb acoustic neutrality and also offers a new degree of flexibility.
- ▶ The shape of our cones is not just beautiful; it has been specially designed to achieve the maximum amount of sonic benefits. We also offer the cones as a separate option for those who want to improve their existing method of product support.
- ▶ The overall height of each table, and the distance between each shelf, has been carefully calculated to achieve an optimum balance of acoustics and aesthetics. But in the final analysis, performance always takes precedence.

The standards of our tables and audio stand are innovative:

- ▶ The tubular frames used in the tables, stands and bases are produced from steel and finished in anti-resonant paint.
- ▶ We reinforce this frame by inserting a crimped steel bar at the end of every tube.
- ▶ All spurious mechanical energies are discharged into the ground through height-adjustable spikes – produced from stainless steel – at the point where the table legs contact the floor. This provides further “solidity” to the sound. In Series 7 Design is also possible to have useful wheels.
- ▶ The spikes are removable to allow the frame to be filled with sand, lead shot or other similar types of damping materials.
- ▶ The final assembly of each table is done by hand utilising a braze welding technique. This method makes use of a special brass solder with a high concentration of nickel alloy, resulting in a weld with an exceptional strength/weight ratio. Simply compare the quality of our welds to that of other tables to immediately see the difference.
- ▶ All shelves are produced from high-density MDF and have the considerable thickness of 19mm / 0.75” and even 30mm / 1.18” on Series Six models. The benefit is a much higher damping factor and superior rigidity over time. Series Seven shelves are realized in 10mm / 0.4” tempered crystal.

# solidsteel



# Series 5

## Audio Table

Series Five tables are the entry-level of our production with superb performances and a very competitive quality-price relationship. They employ new duraluminium cones with the same shape of Series Six. Every aspect of their designs was taken into consideration and, as an added benefit, the bottom shelf of the Series Five tables can be removed and a Model B base placed inside the frame in its stead, thus providing further decoupling for the power amplifier.

Among the many possible solutions –all models are available both in black and silver– you'll find what better fits your functional and aesthetic needs.

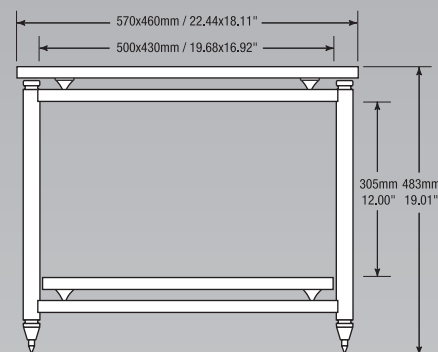
Series Five tables can easily accomodate different audio systems. The shelves height has been carefully designed to find the best compromise between dimensions, usable spaces, vibration damping, and proper balance of the weights.

The overall apparence is very clean and nice, whit welded parts extremely whell refined, and thick MDF shelves 19mm / 0.85 inch.

- Four-leg and two shelf table
- MDF shelves in matte finish
- Steel frame with anti-resonant finish
- Duraluminium cones
- For electronics and turntables
- Finish Black or Silver

# 5.2

## Black - Silver



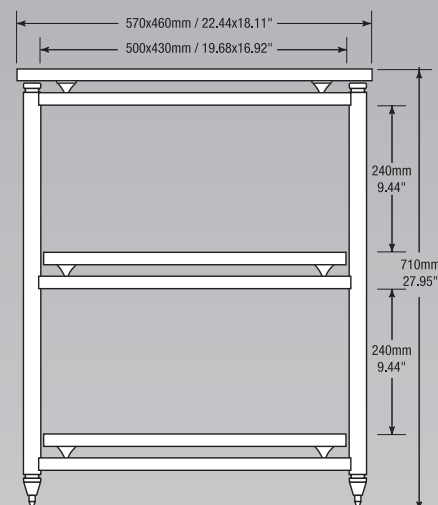
# Series 5

## Audio Table

- Four-leg and three shelf table
- MDF shelves in matte finish
- Steel frame with anti-resonant finish
- Duraluminium cones
- For electronics and turntables
- Finish Black or Silver

# 5.3

## Black - Silver



# Series 5

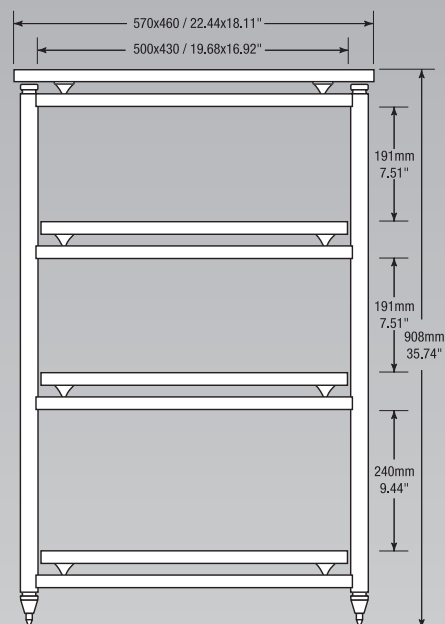
## Audio Table

- Four-leg and four shelf table
- MDF shelves in matte finish
- Steel frame with anti-resonant finish
- Duraluminium cones
- For electronics and turntables
- Finish Black or Silver



# 5.4

## Black - Silver





# Series 5

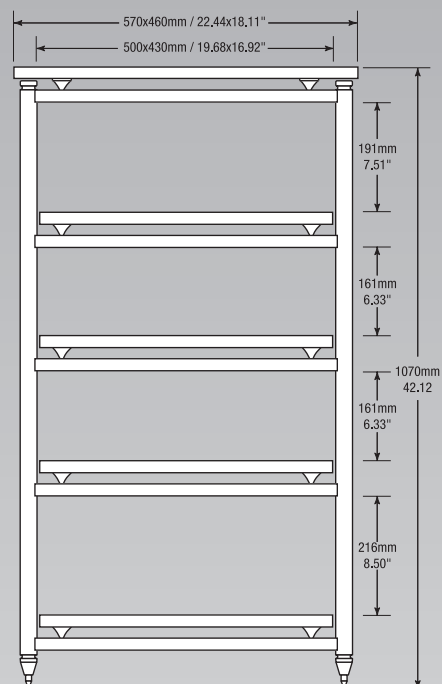
## Audio Table

- Four-leg and five shelf table
- MDF shelves in matte finish
- Steel frame with anti-resonant finish
- Duraluminium cones
- For electronics and turntables
- Finish Black or Silver



# 5.5

## Black - Silver



# Series 6

## Audio Table

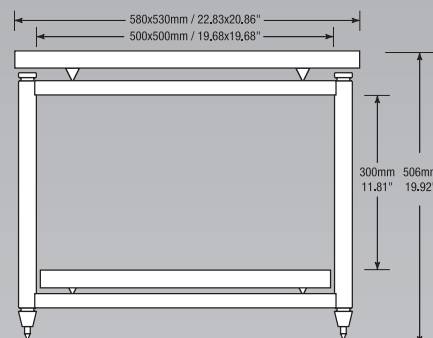
The Models of the Series Six are surely the most sophisticated Solidsteel tables produced to date. Expressly developed for use with the highest-quality electronics, Series Six structural characteristics and dimensions make them noteworthy even when compared to the other tables in our product line. Large components fit easily onto these tables, leaving room for proper air circulation. In fact, everything about the Series Six is "overbuilt" from the steel frame, reinforced at the base; to the 30mm / 1.18" thick MDF shelves that are specially decoupled from the frame; to the functionally elegant spikes. After an electronic component has been positioned, the screw is turned until it just contacts the underside of the shelf, thus adding to the overall rigidity of the system.

- Four-leg and two shelf table
- MDF shelves in matte finish
- Steel frame with anti-resonant finish
- Duraluminium cones, plus decoupling screws
- For electronics and turntables
- Finish Black or Silver



# 6.2

## Black - Silver



The cones utilised with the Series Six tables are produced from duraluminium which has been machined to exceedingly high tolerances, leaving virtually no room for errors in the finish or differences from one piece to the next. This design also anticipates the use of audio equipment that may be particularly heavy.

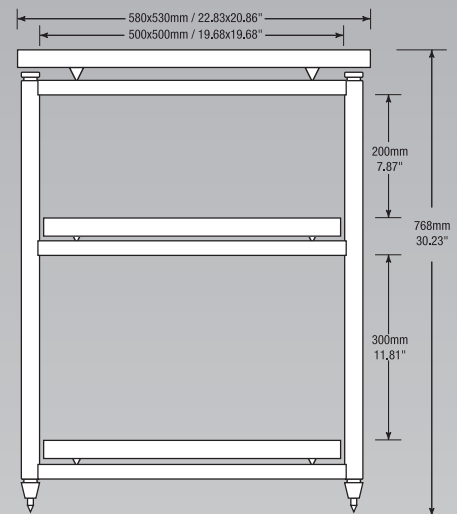
# Series 6

## Audio Table

- Four-leg and three shelf table
- MDF shelves in matte finish
- Steel frame with anti-resonant finish
- Duraluminium cones, plus decoupling screws
- For electronics and turntables
- Finish Black or Silver

# 6.3

## Black - Silver



# Series 6

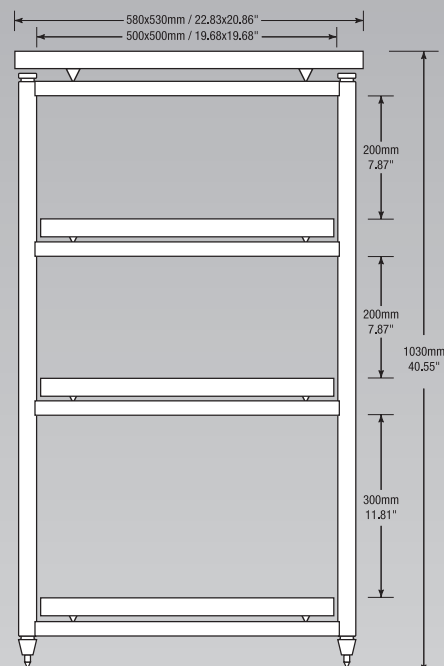
## Audio Table

- Four-leg and four shelf table
- MDF shelves in matte finish
- Steel frame with anti-resonant finish
- Duraluminium cones, plus decoupling screws
- For electronics and turntables
- Finish Black or Silver



# 6.4

## Black - Silver





# H-6 / H-6 Partner

## Audio / AudioVideo Tables

The H-6 table was designed specifically for audio/video applications, since the special 3 legs structure allows the placement of a speaker – central channel – just below the top shelf.

The top shelf will be then ideal for any kind of TV set like Plasma or LCD.

The metal structure is exactly like our flagship Series Six, while the shelves are in terms of thickness and finish like the Series Five.

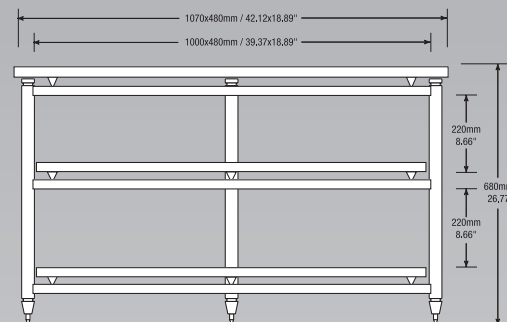
If the products to be accommodated are exceeding the H-6 capability, an ideal solution provided is the dedicated "Partner" table, whit exactly the same finish and height.

- Four-leg and three shelf table
- MDF shelves in matte finish
- Steel frame with anti-resonant finish
- Duraluminium cones, plus decoupling screws
- Finish Black or Silver

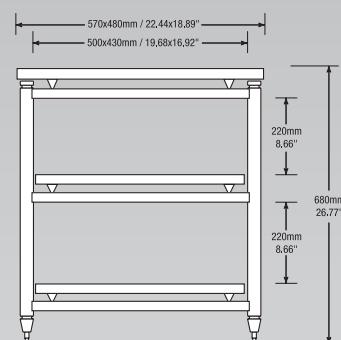


# H-6

## Black - Silver



**H-6**



**H-6 Partner**



# Series 7 Design

## Audio / AudioVideo Tables

Series 7 is specially designed for hi-quality home theatre systems. It can easily fits a TVC or flat panel display. The thick tempered glass shelves, each supported and isolated by duraluminium cones and O-rings deliver great sonic performances.

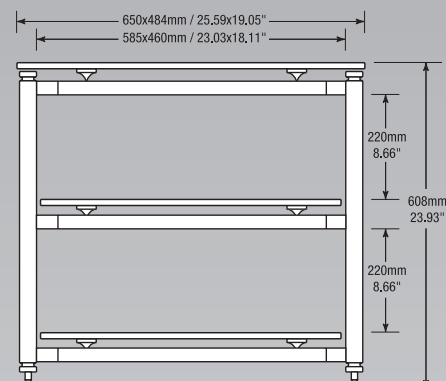
The new Series 7 developed after several years of research, hours of listening sessions and engineering sums up the best of the traditional Solidsteel in the Audio Table production. From the duraluminium cones with O-rings to the stainless steel frames all the details are carefully designed. Among the many possible solutions of Series 7 –with two or three shelves standard or large (H) with Black or Silver finish –you'll find what better matches your needs.

- Four-leg and three shelf table
- 10mm tempered crystal shelves
- Steel frame with anti-resonant finish
- Duraluminium cones and O-rings
- For video applications, can fit a TVC or a flat display up to 28" -29".
- Finish Black or Silver



# 7.3

## Black - Silver



The Series 7 cones are made in duraluminium, with a special rubber O-ring for the specific glass decoupling.



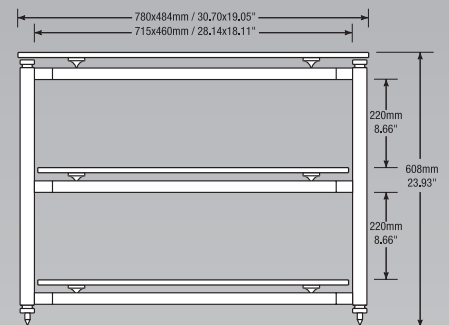
# Series 7 Design

## Audio / AudioVideo Tables

- Four-leg and three shelf table
- 10mm tempered crystal shelves
- Steel frame with anti-resonant finish
- Duraluminium cones and O-rings
- The large H model is for video applications, can fit a TVC or a flat display up to 32".
- Finish Black or Silver

# 7.3 LARGE

## Black - Silver



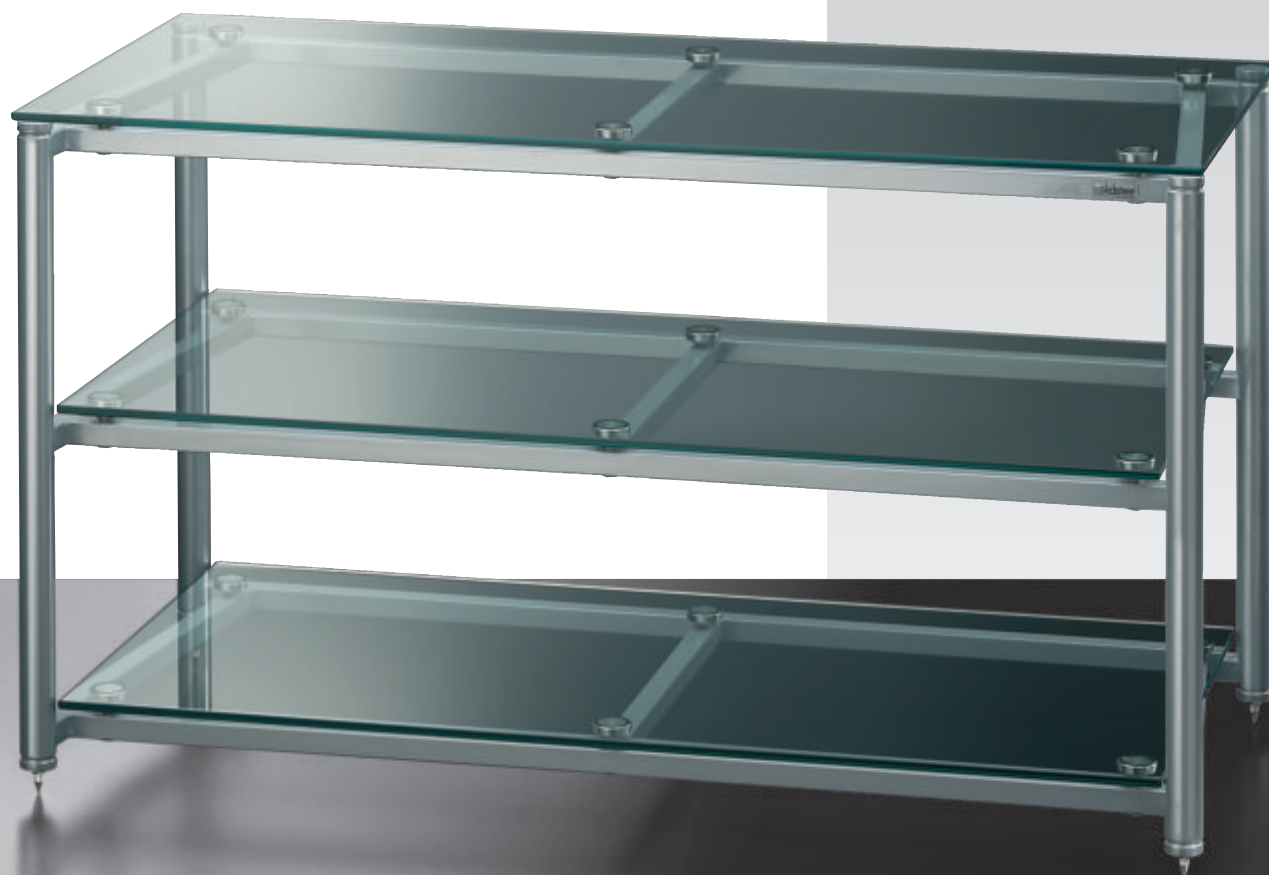
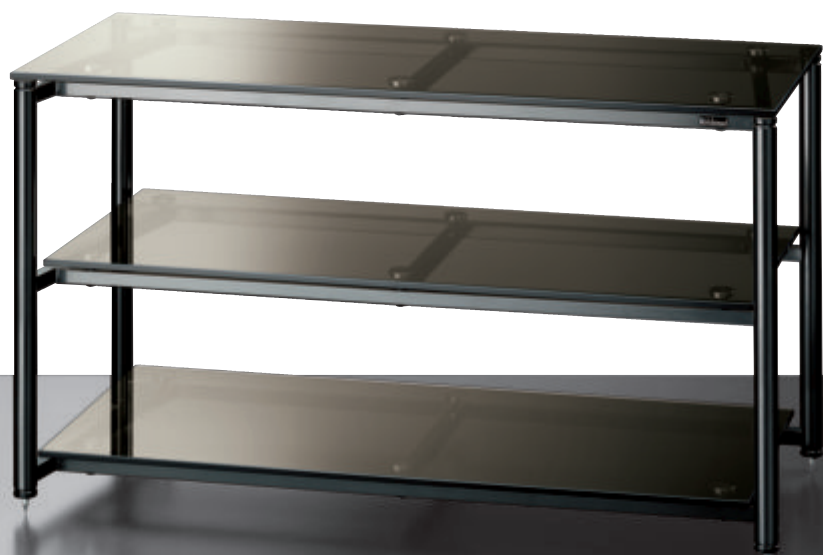
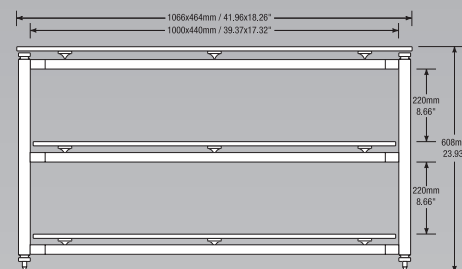
# Series 7 Design

## Audio / AudioVideo Tables

- Four-leg and three shelf table
- 10mm tempered crystal shelves
- Steel frame with anti-resonant finish
- Duraluminium cones and O-rings
- For video applications, can fit a TVC or a flat display up to 42"
- The lower shelf may be used for the electronics
- Finish Black or Silver

# H-7

## Black - Silver

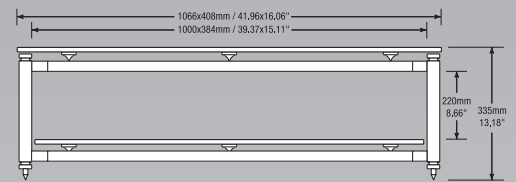
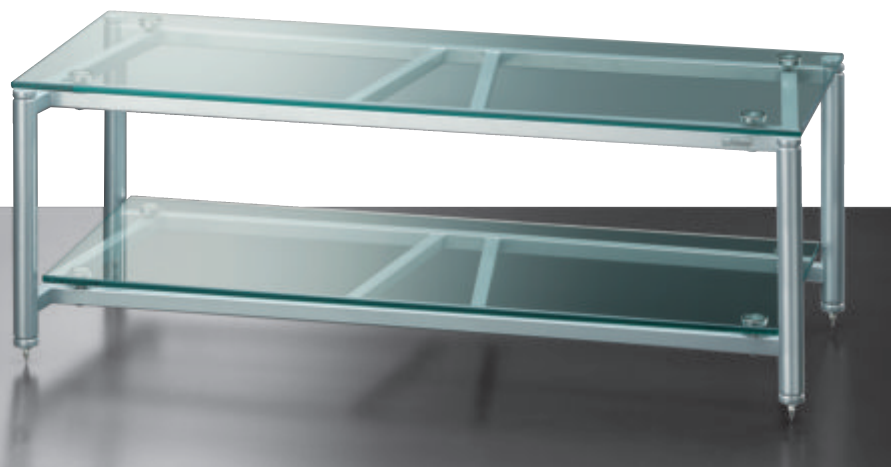




# Series 7 Design

## Audio / AudioVideo Tables

- Four-leg and two shelf table
- 10mm tempered crystal shelves
- Steel frame with anti-resonant finish
- Duraluminium cones and O-rings
- For Home Theatre, video applications, TVC or flat display up to 42" and centre channel speaker below the top shelf or alternatively for the electronics
- Finish Black or Silver



# H-7 SMALL

## Black - Silver



# Series ZR

## Stands for Bookshelf Loudspeakers

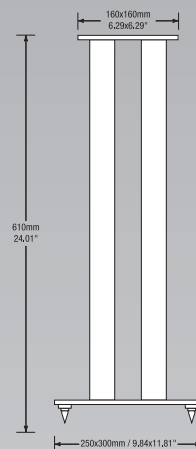
Speakers stands Series ZR are designed for bookshelf-speakers according to strict standards of quality and represent the best quality-price compromise. The structure of the elliptical aluminium steel can be filled with any damping material. Available in three different heights, including the 1m / 39.37" one, of the ZR10, specifically designed for back surround loudspeakers. The ZR Stand bases are equipped with adjustable steel spikes, to fit any surface.

- Stands for Bookshelf Loudspeakers
- Fillable elliptical aluminium pillars 60x30mm / 2.36x1.18"
- Height adjustable, stainless steel spikes
- Finish: Black or Silver

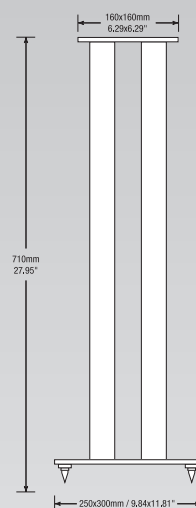


# ZR

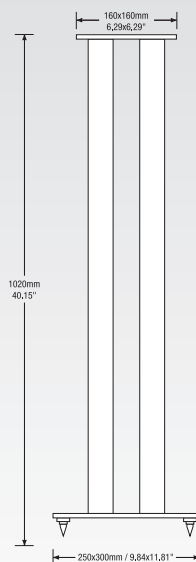
## Black - Silver



**ZR-6**



**ZR-7**



**ZR-10**

# Series ZX

## Stands for Bookshelf Loudspeakers

Speakers stands Series ZX are provided with a wider top-plate, 160x190mm / 6.29x7.48" and are designed for larger speakers. Any elements of the structure has been enlarged: from the fillable elliptical aluminium steel to the 8mm / 0.31" top-plate.

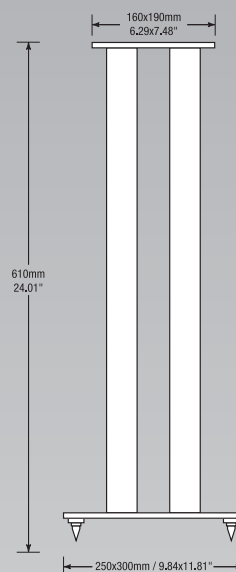
Available in two different heights the stands are suitable for any kind of speakers.

- Stands for Bookshelf Loudspeakers
- Fillable elliptical aluminium pillars 90x45mm / 3.54x1.77"
- Height adjustable, stainless steel spikes
- Finish: Black or Silver

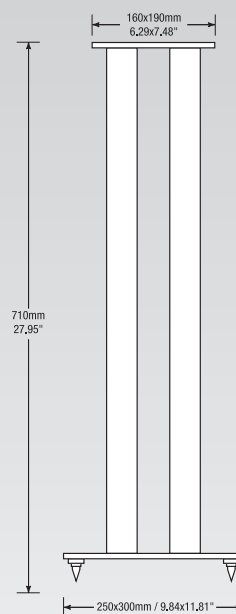


# ZX

## Black - Silver



**ZX-6**



**ZX-7**

# Series SS

## Stands for Bookshelf Loudspeakers

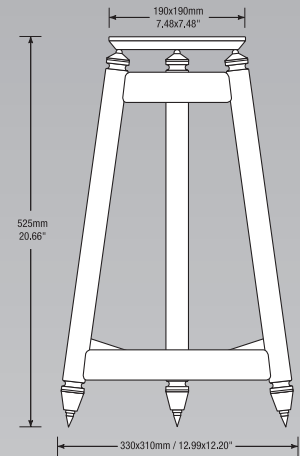
It is of critical importance for the performance of monitor-type loudspeakers to have them positioned at the correct height. Additionally, since this type of speaker is often relatively light in weight compared to floor-standing units, it is essential to maintain high stability and rigidity. And, as with all components, proper decoupling must be considered. The Solidsteel SS Series fulfils a longstanding need regarding the proper setup and enjoyment of monitor speakers, and must in many ways be considered as important as the units they support. The three tubular supports end with a crimped steel bar. The stainless steel spikes are removable to allow the frame to be filled with damping material. The top plate in MDF is interchangeable, ensuring a high degree of optimization with the largest number of loudspeakers. Decoupling between the chassis and the shelf is achieved through three high precision ball bearings. The SS stands are supplied with "Blue-Tak" to properly fix the speaker to the top plate.

- Three-leg speaker stands
- MDF top plate in black matte finish
- Stainless steel vertical tubular supports with anti-resonant finish
- Height-adjustable, stainless steel spikes
- Finish: Black or Silver

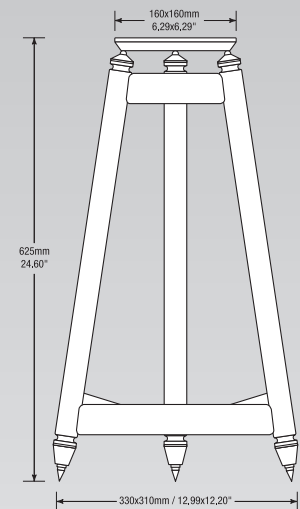


# SS

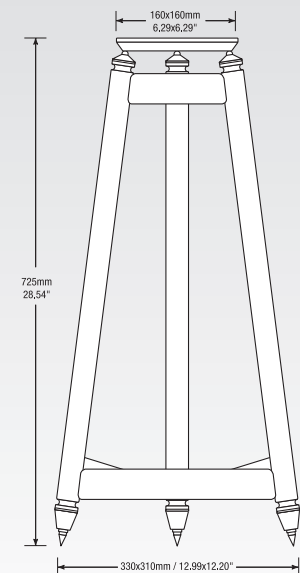
## Black - Silver



**SS-5**



**SS-6**



**SS-7**



# AB Series

## Power Amplifier Tables

In high-quality hi-fi systems it is always a good idea to keep the power amp well away from the preamp and source components. It is in fact preferable to have one's amp rest on an entirely different surface than the other equipment. With this in mind, Solidsteel has thus developed the Model A and Model B, perhaps the most advanced power amp tables ever built. Specifically designed for units that weigh at least six kilograms / 13 pounds, the Models A and B can accommodate virtually every power amp currently available.

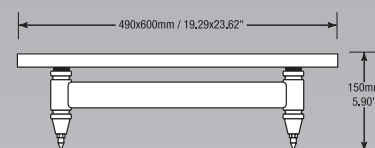
The frames are constructed from steel and finished in black or silver anti-resonant paint. The legs can be fitted with height-adjustable stainless steel spikes.

The shelves are produced from 19mm / 0.75" thick MDF. Decoupling between the chassis and the shelf is achieved via constrained-layer damping: a special layer of resonance-deadening rubber is sandwiched between two stiffer rubber discs; this three-section "shock absorber" is then inserted between the shelf and the table's legs.

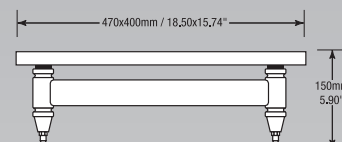
- Four-leg power amp table
- MDF top shelf
- Steel frame with anti-resonant finish.
- Composite rubber decoupling between frame and shelf
- Finish: Black or Silver

# AB

## Black - Silver



**Model A**



**Model B**



# Accessories

---

For the enthusiast Solidsteel has designed a set of duraluminium cones and stainless steel discs which can be placed under the points of the cones. The sets are the same of Series Five and Six and can be employed with tables of any manufacturer and with any electronics and speakers. The wide useful surface of the cones and the excellent discs shape allow an effective discharge of vibrations with the result of considerable improved performances.



**CD-5**



**CD-6**



**D-3.4**

## **CD-5**

A set contains 3 duraluminium cones, the same type of Series 5 models, plus stainless steel discs which can be placed under the points of the cones.

## **CD-6**

A set contains 3 duraluminium cones, the same type of Series 6 models, plus stainless steel discs which can be placed under the points of the cones.

## **D-3.4**

A stainless steel set of discs which can be placed under the points of the cones.

## **Set of 4 wheels**

All the exclusive Series 7 tables are provided with 8mm steel spikes and useful and solid wheels. The user can choose the best options . Using an optional set of stainless steel D-3.4 caps, under the spikes, delicate floor surfaces can be protected.



## Audio Tables

Model	Description	Dimensions	Dimensions of/between shelves	Colour(s)
<b>5.2</b>	Audio table 2 shelves	<b>W570 H483 D460mm</b> 22.44x19.01x18.11"	<b>W500 H305 D430mm</b> 19.68x12.00x16.92"	Black/Silver
<b>5.3</b>	Audio table 3 shelves	<b>W570 H710 D460</b> 22.44x27.95x18.11"	<b>W500 H240-240 D430</b> 19.68x9.44-9.44x16.92"	Black/Silver
<b>5.4</b>	Audio table 4 shelves	<b>W570 H908 D460</b> 22.44x35.74x18.11"	<b>W500 H240-191-191 D430</b> 19.68x9.44-7.51-7.51x16.92"	Black/Silver
<b>5.5</b>	Audio table 5 shelves	<b>W570 H1070 D460</b> 22.44x42.12x18.11"	<b>W500 H216-161-161-191 D430</b> 19.68x8.50-6.33-6.33-7.51x16.92"	Black/Silver
<b>6.2</b>	Audio table 2 shelves	<b>W580 H506 D530</b> 22.83x19.92x20.86"	<b>W500 H300 D500</b> 19.68x11.81x19.68"	Black/Silver
<b>6.3</b>	Audio table 3 shelves	<b>W580 H768 D530</b> 22.83x30.23x20.86"	<b>W500 H300-200 D500</b> 19.68x11.81-7.87x19.68"	Black/Silver
<b>6.4</b>	Audio table 4 shelves	<b>W580 H1030 D530</b> 22.83x40.55x20.86"	<b>W500 H300-200-200 D500</b> 19.68x11.81-7.87-7.87x19.68"	Black/Silver

## Audio / AudioVideo Tables

Model	Description	Dimensions	Dimensions of/between shelves	Colour(s)
<b>H-6</b>	Audio table 3 shelves	<b>W1070 H680 D480</b> 42.12x26.77x18.89"	<b>W1000 H220-220 D430</b> 39.37x8.66-8.66x16.92"	Black/Silver
<b>H-6 Partner</b>	Partner Audio table 3 shelves	<b>W570 H680 D480</b> 22.44x26.77x18.89"	<b>W500 H220-220 D430</b> 19.68x8.66-8.66x16.92"	Black/Silver

## Audio / AudioVideo Tables (crystal)

Model	Description	Dimensions	Dimensions of/between shelves	Colour(s)
<b>7.3</b>	Audio-Audio/Video table 3 shelves	<b>W650 H608 D484</b> 25.59x23.93x19.05"	<b>W585 H220-220 D460</b> 23.03x8.66-8.66x18.11"	Black/Silver
<b>7.3 Large</b>	Audio-Audio/Video table 3 shelves	<b>W780 H608 D484</b> 30.70x23.93x19.05"	<b>W715 H220-220 D460</b> 28.14x8.66-8.66x18.11"	Black/Silver
<b>H-7</b>	Audio-Audio/Video table 3 shelves	<b>W1066 H608 D464</b> 41.96x23.93x18.26"	<b>W1000 H220-220 D440</b> 39.37x8.66-8.66x17.32"	Black/Silver
<b>H-7 Small</b>	Audio-Audio/Video table 2 shelves	<b>W1066 H335 D408</b> 41.96x13.18x16.06"	<b>W1000 H220 D384</b> 39.37x8.66x15.11"	Black/Silver

## Stands for Bookshelf Loudspeakers

Model	Description	Dimensions	Top	Colour(s)
<b>SS-5</b>	Stands for Bookshelf Loudspeakers	<b>W330 H525 D310</b> 12.99x20.66x12.20"	<b>W190 x D190</b> 7.48x7.48"	Black/Silver
<b>SS-6</b>	Stands for Bookshelf Loudspeakers	<b>W330 H625 D310</b> 12.99x24.60x12.20"	<b>W160 x D160</b> 6.29x6.29"	Black/Silver
<b>SS-7</b>	Stands for Bookshelf Loudspeakers	<b>W330 H725 D310</b> 12.99x28.54x12.20"	<b>W160 x D160</b> 6.29x6.29"	Black/Silver
<b>ZR-6</b>	Stands for Bookshelf Loudspeakers	<b>W250 H610 D300</b> 9.84x24.01x11.81"	<b>W160 x D160</b> 6.29x6.29"	Black/Silver
<b>ZR-7</b>	Stands for Bookshelf Loudspeakers	<b>W250 H710 D300</b> 9.84x27.95x11.81"	<b>W160 x D160</b> 6.29x6.29"	Black/Silver
<b>ZR-10</b>	Stands for Bookshelf Loudspeakers	<b>W250 H1020 D300</b> 9.84x40.15x11.81"	<b>W160 x D160</b> 6.29x6.29"	Black/Silver
<b>ZX-6</b>	Stands for Bookshelf Loudspeakers	<b>W250 H610 D300</b> 9.84x24.01x11.81"	<b>W160 x D190</b> 6.29x7.48"	Black/Silver
<b>ZX-7</b>	Stands for Bookshelf Loudspeakers	<b>W250 H710 D300</b> 9.84x27.95x11.81"	<b>W160 x D190</b> 6.29x7.48"	Black/Silver

## Power Amplifier Tables

Model	Description	Dimensions	Top	Colour(s)
<b>Model A</b>	Power amplifier table	<b>W490 H150 D600</b> 19.29x5.90x23.6"	<b>W490 x D600</b> 19.29x23.62"	Black/Silver
<b>Model B</b>	Power amplifier table	<b>W470 H150 D400</b> 18.50x5.90x15.74"	<b>W470 x D400</b> 18.50x15.74"	Black/Silver

**solidsteel**  
**www.solidsteel.it**

International Marketing by

**AUDIOGAMMA**

Via Pietro Calvi 16 - 20129 Milano Italy

Tel +39 02 55181610 Fax +39 02 55181961

[info@audiogamma.it](mailto:info@audiogamma.it) [www.audiogamma.it](http://www.audiogamma.it)